

# CONDO CRUISER 550

## GENERAL SPECIFICATIONS

Length:	55'0"
Beam:	15'0"
Propulsion:	Twin 190 hp 4.3L Mercruisers I/O
Generator:	10.0 kW BEG Westerbeke
Air Conditioning:	2.5 Ton Lennox Heat Pump w/ Furnace
Fuel Capacity:	160 Gallons
Water Capacity:	150 Gallons
Waste Capacity:	100 Gallons



## Interior Features

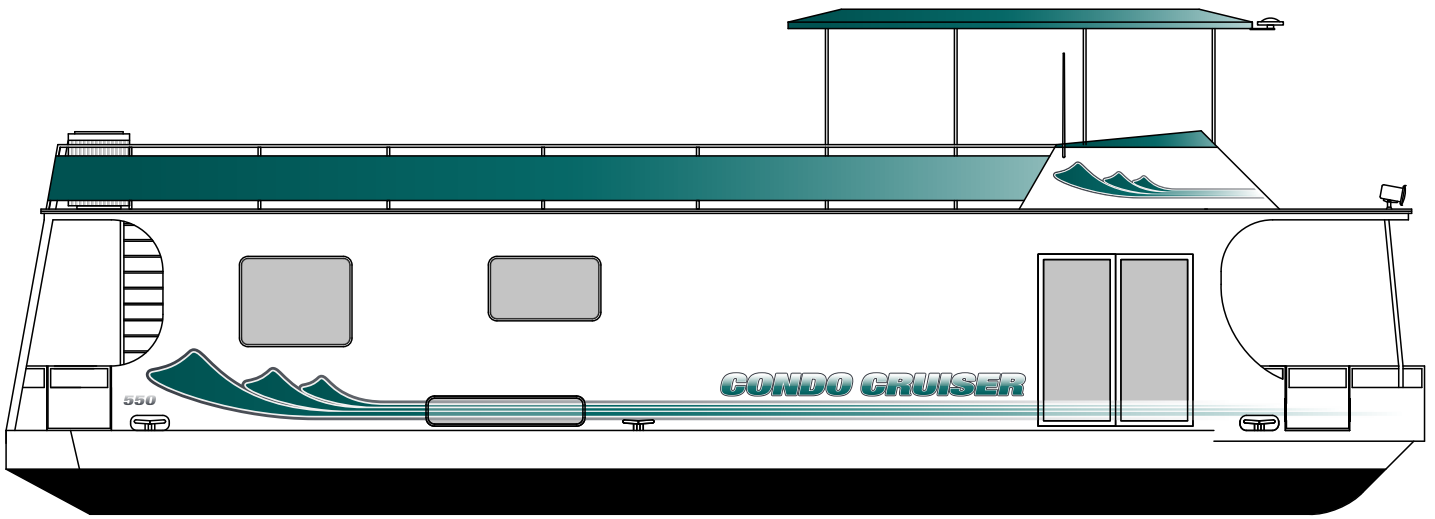
- Full Size Galley, Cabinets & Appliances
- Huge Salon w/ Wraparound Windows
- Salon Furniture Package (\$2,000 Allowance)
- Queen Berth Master Suite w/ 6' Patio Door
- 32" LCD HD Television w/ Home Theater

## Year-Round Livaboard Package

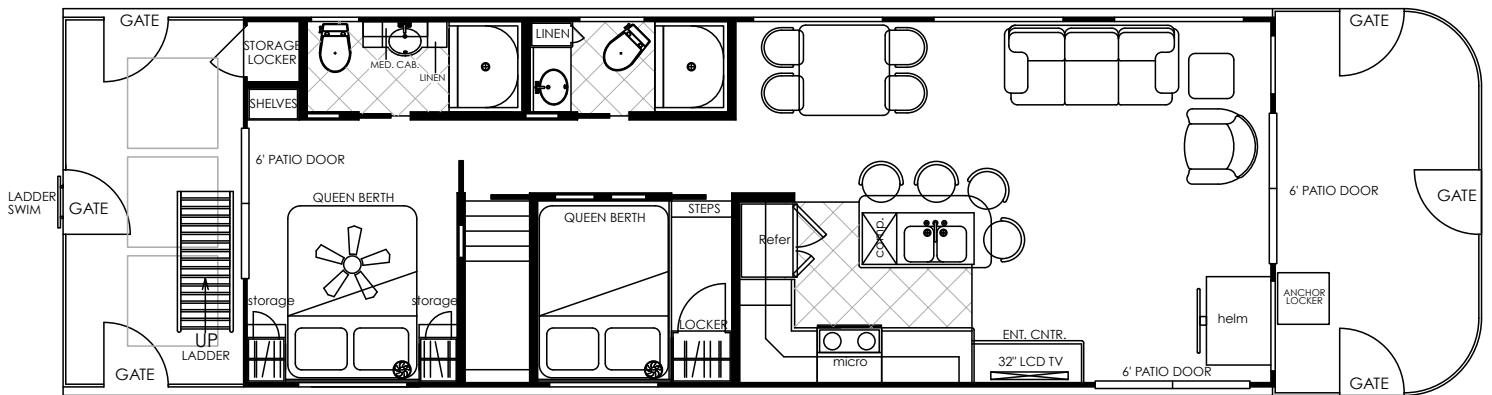
- HVAC – High Efficiency Forced Air Furnace System
- Storage – Extensive Finished Storage Areas in Hull
- Walls – 2" CorTec Composite Insulated Walls
- Glass – Insulated Windows & Exterior Doors
- Roof – Winter Approved & Insulated Roof System

## The SkipperLiner Difference

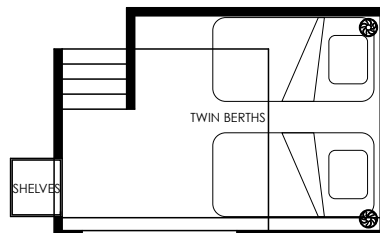
- SkipperLiner Service Center–100% CSI Rating
- Full Service North Bay Marina Facility
- Huck Finn's Restaurant, Deck & Bar
- Complete Onsite Winter Storage Services
- Meets USCG, NMMA, & ABYC Standards



STARBOARD PROFILE



MAIN DECK ARRANGEMENT



LOWER DECK ARRANGEMENT