



La Familia

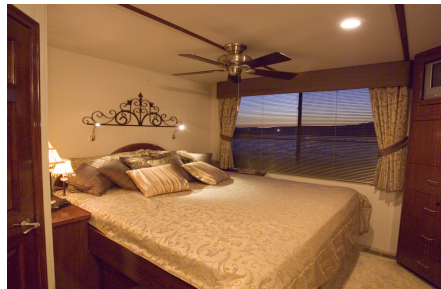
SKIPPERLINER 750 CY

■ ■ ■ SERIES 312

GENERAL SPECIFICATIONS

Hull Length:	75'0"
Hull Beam:	17'0"
Hull Depth:	4'6"
Deckhouse Length:	55'0"
Dry Weight:	96,320 lbs
Propulsion:	Twin 300 hp 350 MAG MPI Mercruisers
Generator:	20.0 kW Westerbeke Safe-CO
Air Conditioning:	5.0 Ton Trane
Inverter:	6,000 Watt Phoenix
Satellite:	KVH TracVision C3
Water Purification:	EcoSmarte Turbo Boat
Fuel Capacity:	800 Gallons
Water Capacity:	Unlimited / 100 Gallons Reserve
Waste Capacity:	516 Gallons

CONTACT US AT **801.599.7841** FOR MORE INFO



127 Marina Drive • La Crosse, Wisconsin 54603 • 1-877-SL BOATS • www.skipperliner.com



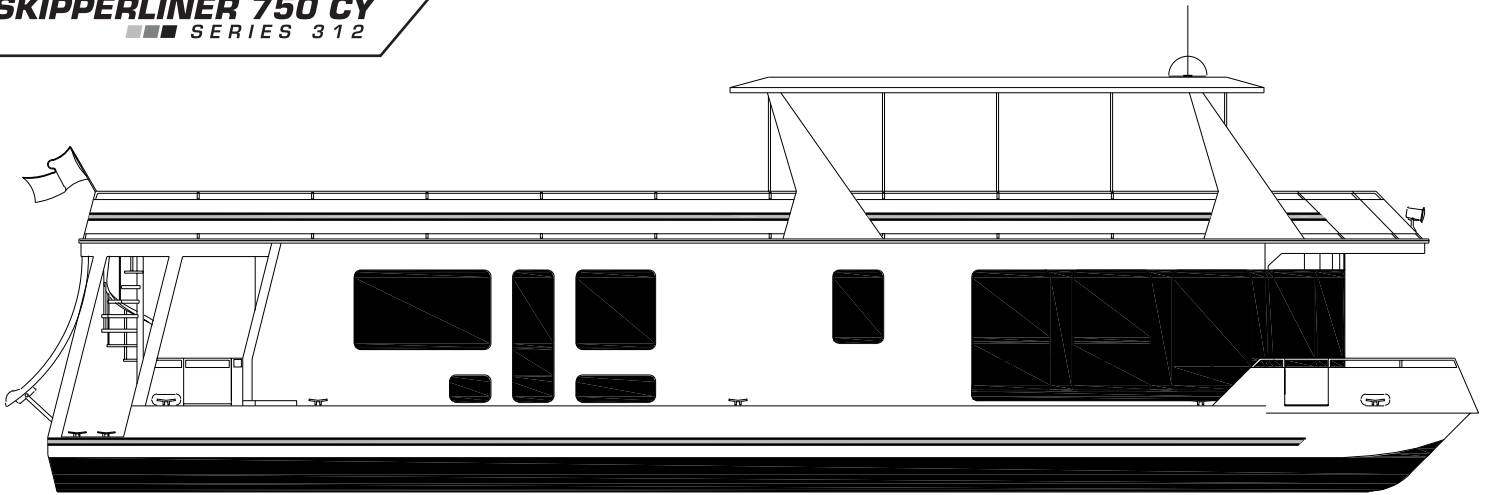
Exclusives

- Luxurious Mega-Yacht Style Berth Package
- Millennium Forecastle w/Floor-to-Ceiling Wraparound Wall
- 7'0" Wide Marine Deck Door w/ Screen – Aluminum 2000
- Engineered Steel Cruising Hull by Certified Welders
- Engineered 24 Step Paint Coating System – International
- Non-Skid Deck Surface (Safety Feature) – Fore & Aft
- Extra Tall Deck Canopy System w/ Steel Support – Fore & Aft
- Solid Core Insulated Headliner w/ Leather Look
- Quiet Deck Roof Sole System w/ Deck Carpeting
- Extra Large Window Package Throughout
- SkipperLiner Warranty, Delivery & Service

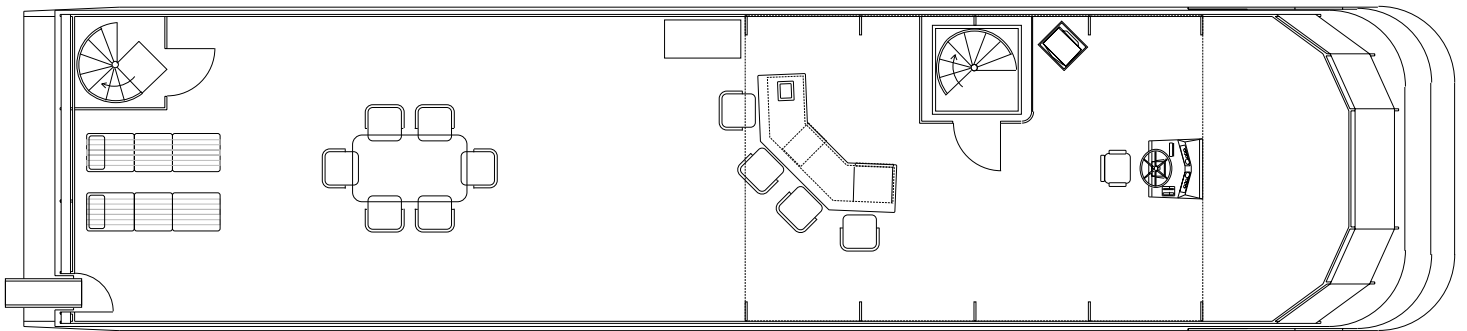
Gourmet Galley

- 19.9 Cu. Ft. Built-In Counter Depth Refrigerator – Sub-Zero
- 5.1 Cu. Ft. Freezer Drawers w/ Ice Maker – Sub-Zero
- Stainless Steel Gas Range Convection Oven w/ Hood - Wolf
- Stainless Steel Microwave Oven - Sharp
- Stainless Steel Dishwasher - Asko
- Stainless Steel Ice Maker – Sub-Zero
- Dual Compartment Solid Surface Under Mount Sink
- Custom Circular Counter Height Island Bar w/ Storage
- Custom Mega-Yacht Style Cabinetry Package
- Custom Solid Surface Countertops
- Family Dinner & Entertainment Seating for 16

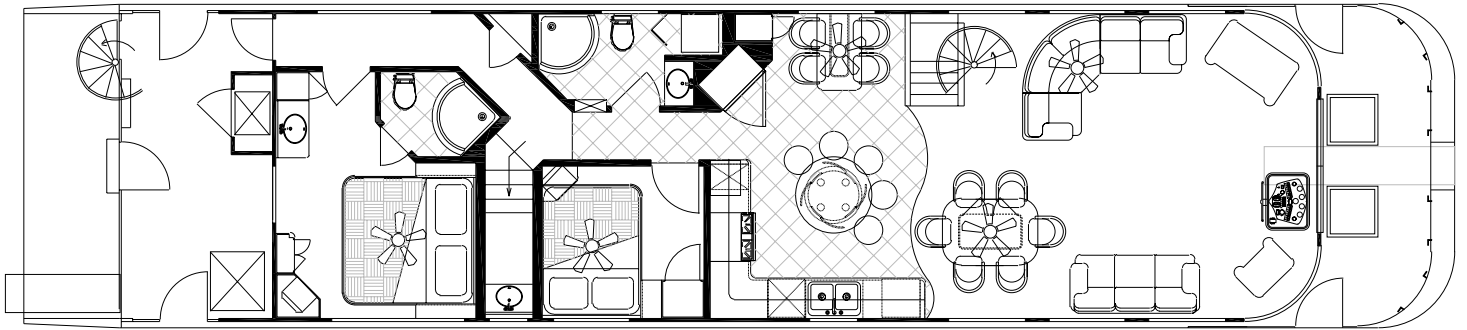
SKIPPERLINER 750 CY
SERIES 312



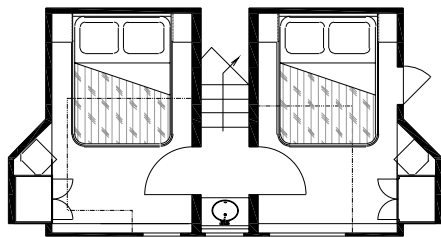
STARBOARD PROFILE



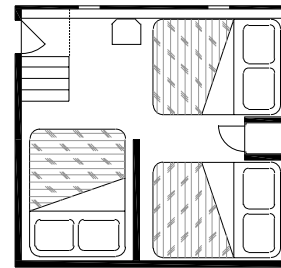
UPPER DECK ARRANGEMENT



MAIN DECK ARRANGEMENT



LOWER AFT STATEROOMS



FORWARD STATEROOMS

La Familia